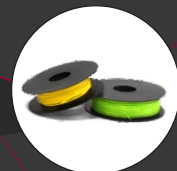
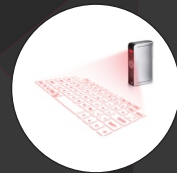


ARMAN VISION TECHNOLOGY



perfection is our profession

botObjects Zmorph

livescribe formlabs

Cubify BOSYSTEMS celluon

LEAP
MOTION

MANKATI

SanDisk

WWW.ARMAN-TECH.COM

**MULTIFUNCTIONAL
TOOL HEADS**
Flexibility for creative minds

WORKING AREA 250 x 235 x 165 mm . Maximum possible work area
300 x 235 x 165 mm (with open covers)

MATERIAL ABS, PLA, PVA, nylon (Taulman or other source),
Stick filament, polycarbonate, BandLay, LayBrick, LayWoo-d3, rubber, ceramics,
cake and chocolate, metal engraving, wood engraving and milling , paper cutting.

NOZZLE TYPE interchangeable hot-ends : 0.3mm, 0.4mm, 0.5mm

MAX. TRAVEL SPEED 500 mm/s

INTERCHANGEABLE TOOLHEADS

plastic 3mm, plastic 1.75, plastic dual head extruder, ceramics, food (chocolate or
paste etc.), dremel mount for 2D and 3D CNC milling, touch probe (buildplate
calibration and 3d touch-scanning), LASER toolhead for cutting and engraving,
experimental 5-axis toolhead, rubber extruder. More toolheads are planned to be
released in upcoming months.

COMMUNICATION USB and LAN (can use WIFI to communicate). Stand
alone printing supported via Panel + internal SD card.

RECOMMENDED MINIMUM LAYER HEIGHT
0.1 for ABS and 0.025 for PLA

3D printer



Zmorph



bot objects

Printer Features

Print Technology: Full color FFF-based printing
systemBuild Volume: 275 mm x 275 mm x 300 mm (W x D x H)
Layer Resolution Standard Settings:
High: 25 microns (0.025 mm)
Medium: 100 microns (0.1 mm)
Low: 200 microns (0.2 mm)
Filament Diameter: 1.75 mmSpeed:175mm/s max printing

3D printer

bot objects

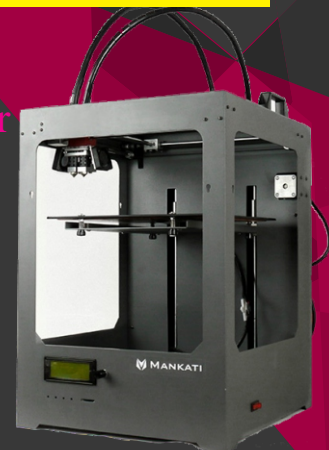


Mankati

Build Volume 250 L x 250 W x 300 H mm
[9.8 L x 9.8 W x 11.8 H IN]
Layer Resolution 0.02 mm (20 Micron)
Filament Type ABS, PLA, PVA
Filament Diameter 3 mm
File Support STL, OBJ, Gcode

3D printer

MANKATI



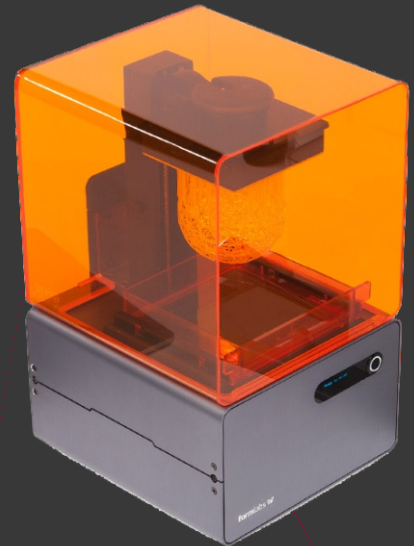
Form 1+

Technology Stereolithography (SLA)
 Build Volume 125 × 125 × 165 mm
 Min Feature Size 300 microns
 Layer Thickness 25, 50, 100 microns
 Laser Specifications EN 60825-1:2007 certified
 Class 1 Laser Product
 405nm violet laser

Materials

Flexible Resin, Castable Resin, standard Resin

3D printer



3D Scanner



SENSE

Supported operating systems
 Windows 7® (32-bit or 64-bit)
 Windows 8® (32-bit or 64-bit)
 Mac OS X 10.8 or later
 File format STL , OBJ
 Scan volume Min: 0.2m x 0.2m x 0.2m
 Max: 3m x 3m x 3m
 Dimensions 17.8cm x 12.9cm x 3.3cm
 Operating range Min: 0.35m
 Max: 3m
 Spatial x/y resolution 0.5m 0.9mm
 Depth resolution 0.5m 1mm
 Maximal Image Throughput 30 fps



CAPTURE

Scan Speed	0.3 sec per scan
Field of View (Diagonal)/Near End – Far End	172 – 260 mm 6.77 – 10.24 in
Field of View (X-Y)/Near End – Far End	123×120 – 192×175 mm 4.84×4.72 – 7.56×6.89 in
Clearance Distance	300 mm 11.81 in
Depth of Fie	180 mm 7.09 in
Resolution	
Average Points	985,000 per scan
Average Polygons	1.97 million per scan
Point to Point Distance	0.162 mm 0.000638 in (at center of volume)

3D Scanner



Leap Motion

The Leap Motion Controller senses how you naturally move your hands and lets you use your computer in a whole new way. Point, wave, reach, grab. Pick something up and move it. Do things you never dreamed possible

LEAP
MOTION



Save notes & pencasts directly to your computer

Record everything you hear, say and write, while linking your audio recordings to your notes.

Replay audio directly from paper by tapping on your notes

Livescribe Desktop software allows you to save, organize and play back interactive notes from your Mac or Windows computer.

Share notes and pencasts as images.

Compatibility

Mac or Windows computer that meets System Requirements



Filament

Materials: ABS,PLA,HIPS,NYLON,POM,Tglass,Wood,PVA

Diameter: 1.75/3.0 mm



Formlabs Materials

Flexible Resin,Castable Resin,standard Resin(Clear Resin,White Resin,Grey Resin,Black Resin)



Address: 2nd floor, No 32, Salman alley, Shariati St. Tehran, Iran.

Email:
info@arman-tech.com

phone:
+98 21 22 63 65 04

website:
www.arman-tech.com

